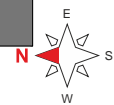
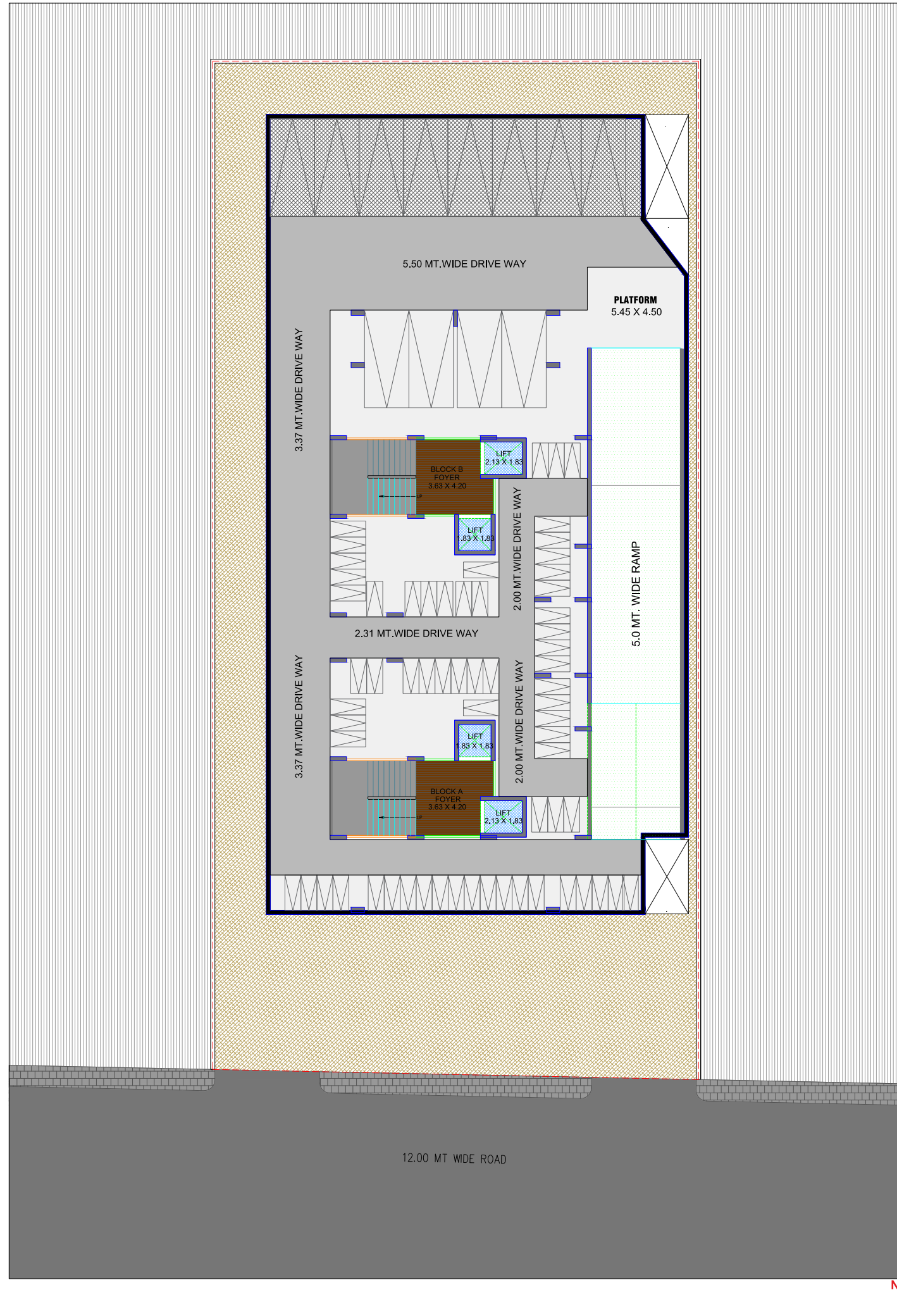


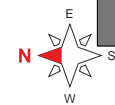
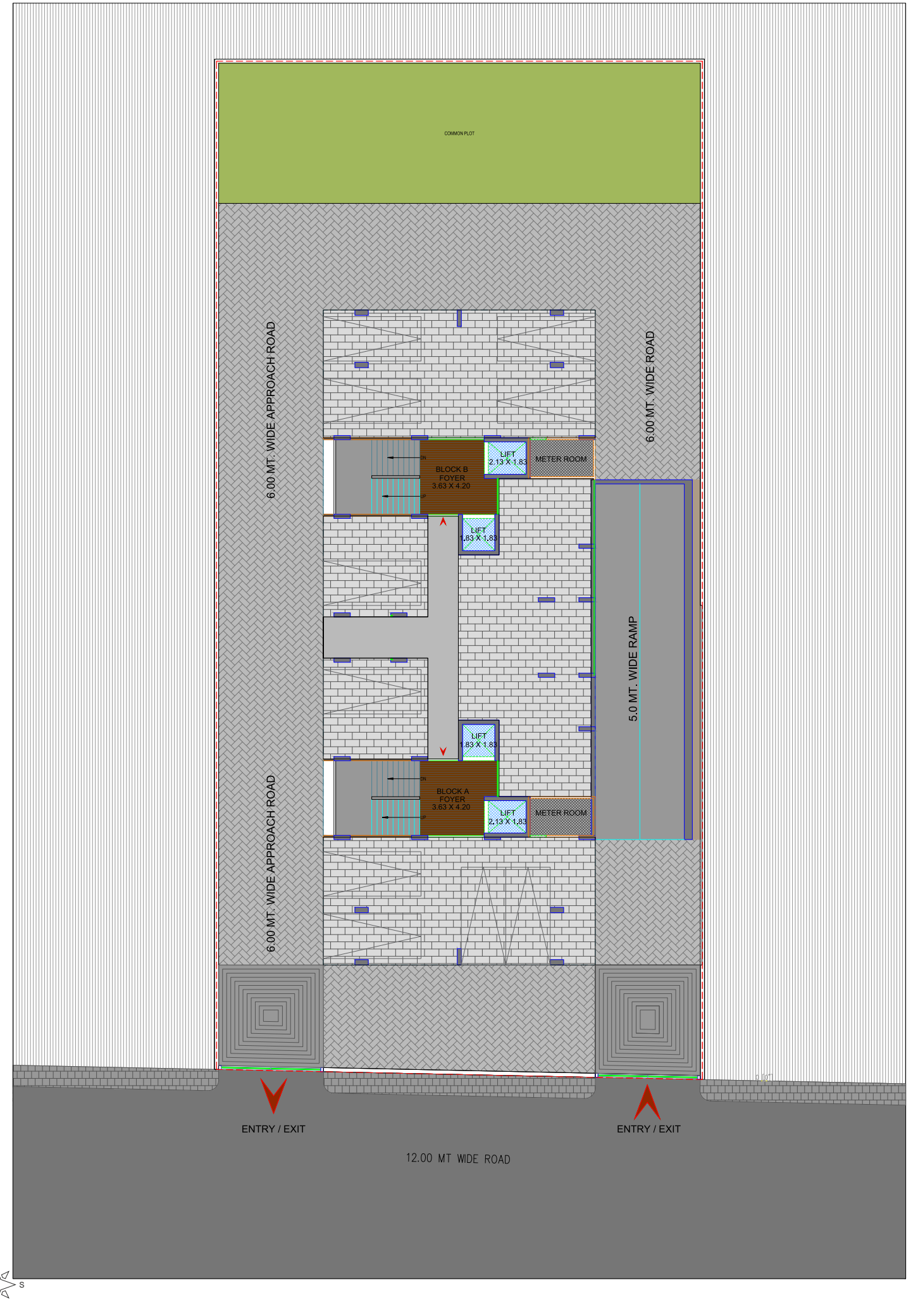


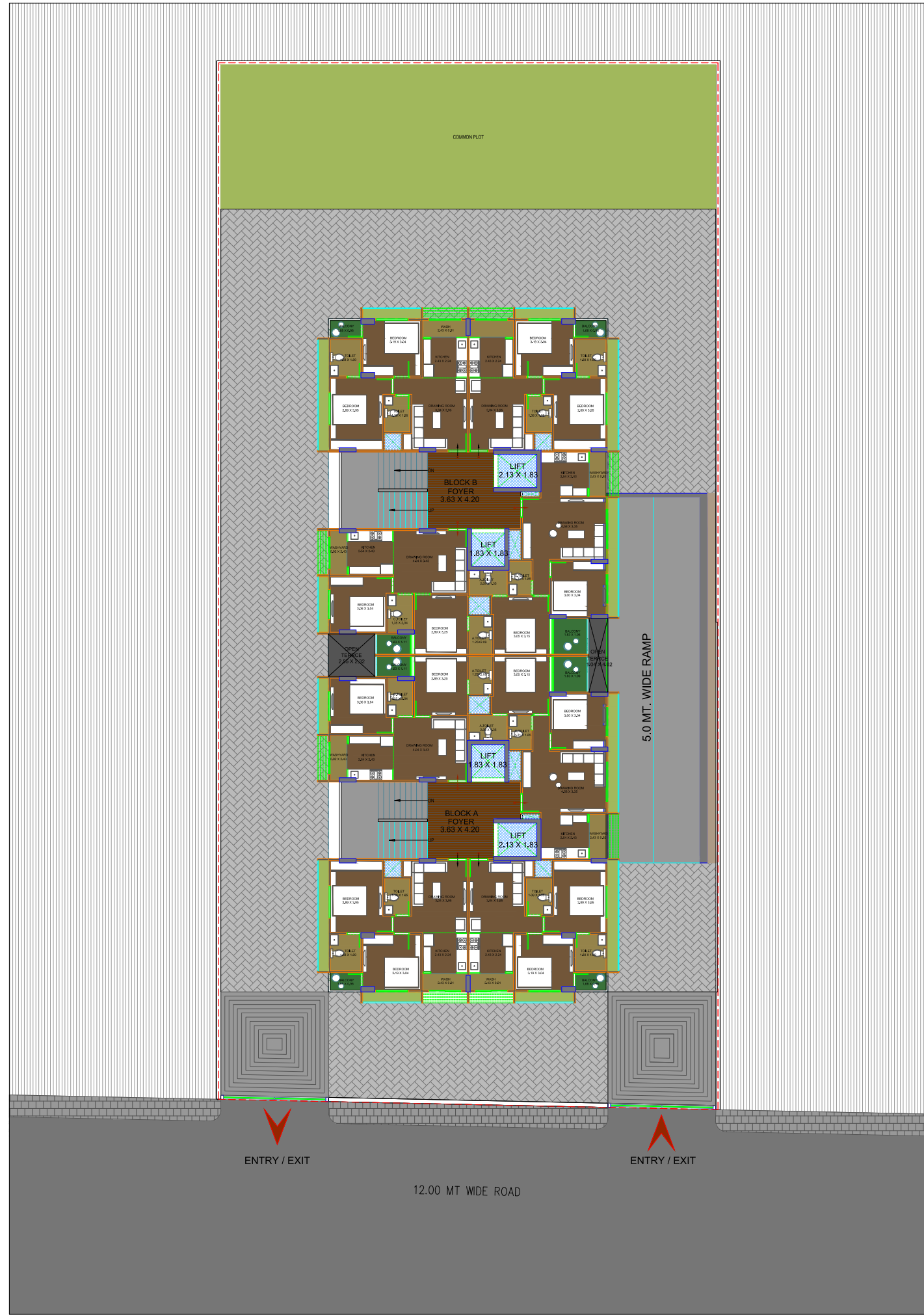
2 BHK
Luxury Flats

BASEMENT PLAN

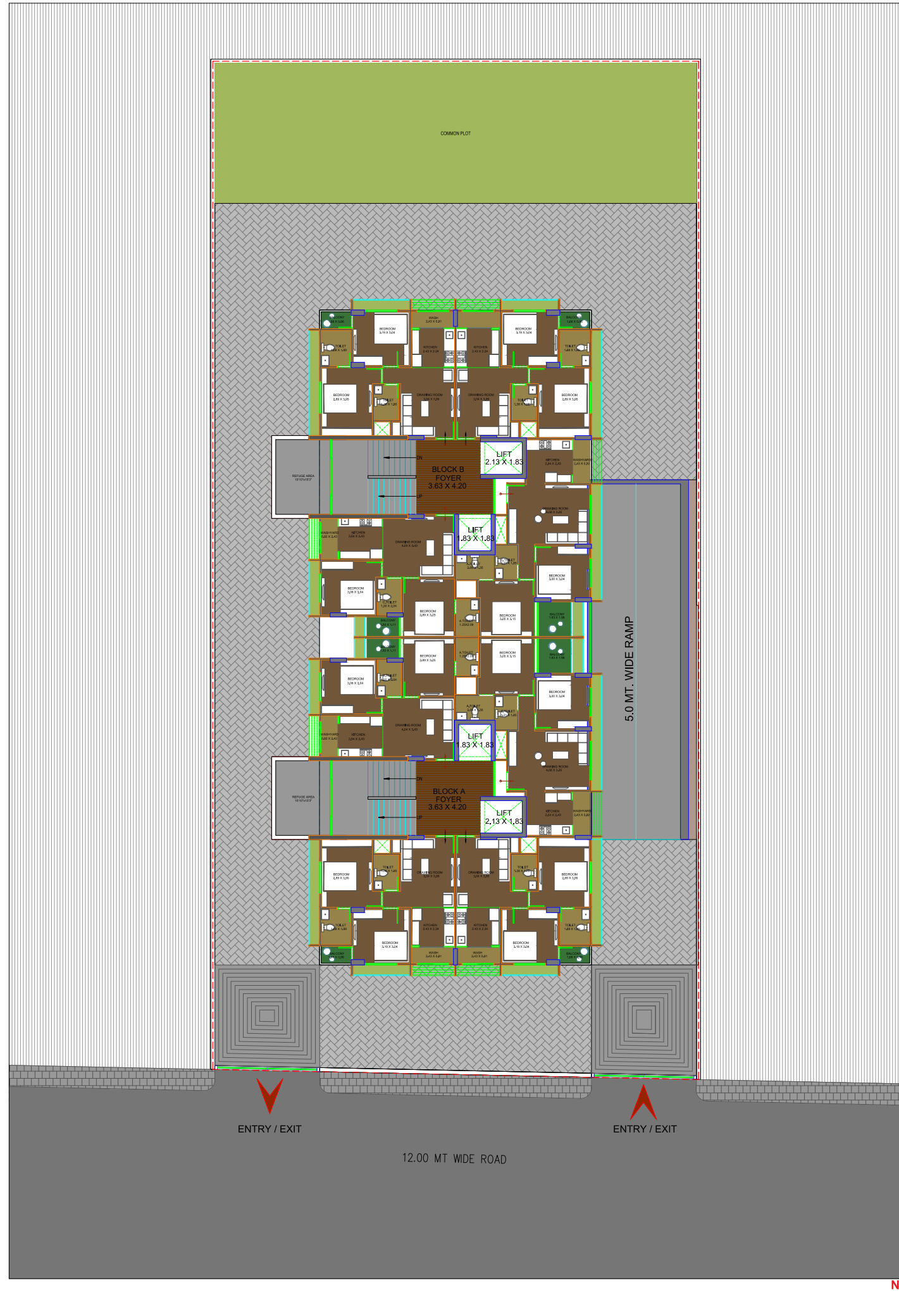


GROUND FLOOR PLAN

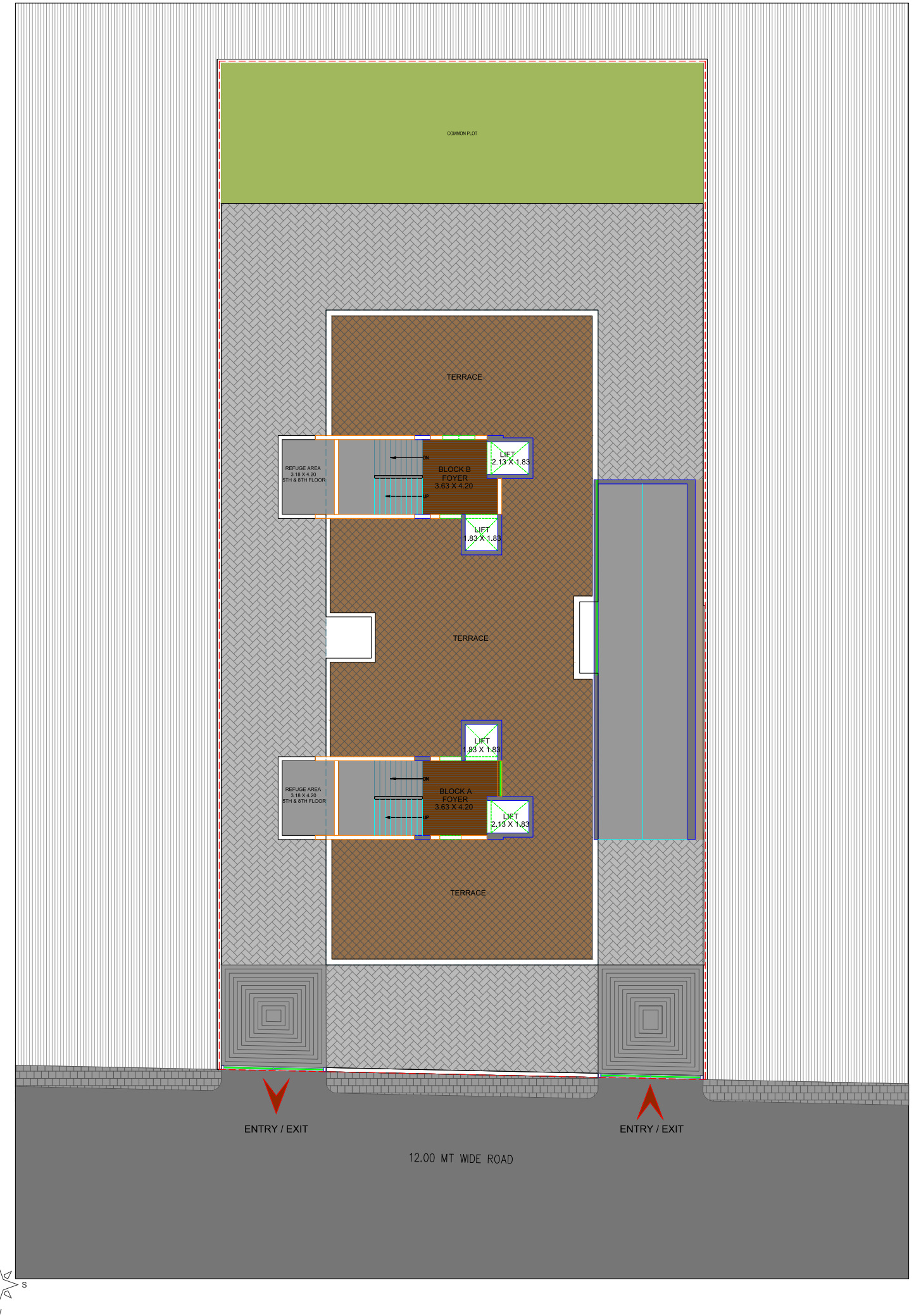




5th & 8th FLOOR PLAN



TERRACE FLOOR PLAN



SPECIFICATION

WINDOWS

- Aluminium section sliding windows with glass & stone jams.

FLOORING

- Vitried tiles flooring in all rooms.

WALL FINISH

- Internal : Smooth finish mala plaster with putty.
- External : Double coat sand faced plaster or texture finish.

ELECTRIFICATION

- 3 Phase meter + MCB & ELCB tripper with concealed wiring & adequate points with quality fittings.

TOILET

- Ceramic tiles flooring in all toilests, glazed tiles dado.

DOORS

- Decorative main door having lock of reputed company.
- Internal flush doors.

PLUMBING

- Concealed plumbing of good qualit UPVC & CPVC pipes, c.p. fittings & sanitary ware of reputed brand.

KITCHEN & STORE

- Standing polished natural granite kitchen platform with sink & glazed tiles DEDO above the platform up to lintel level.

PAINT

- Exterior acrylic paint.
- Internal walls putty finish.

KEYPLAN



Developers



RAJENDRA PATEL | Mo. 98250 98159

ARCHITECT



STRUCTURE CONSULTANTS



Site Address

222/2, Near Ananta Arise, Ghuma BRTS Raod, Ghuma, Ahmedabad - 380058